

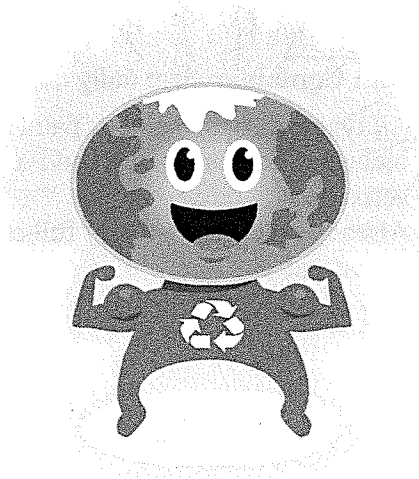
**Grandview Waste Disposal Site
"Manitoba Paint Recycling Program"
Effective May 13, 2013**

The 'program' includes Architectural (Household) Paint in containers under 25L in size and all paint aerosols (automotive, industrial, etc.). There are two major types of household paints: Latex (water based) and Alkyd (solvent based) paint. Both types are accepted by the program regardless of the sheen/gloss or finish, solid or transparent.

The Grandview Waste Disposal Site accepts these products provided they are in original container, the container is properly sealed and in good condition (no holes, tears or significant rust).

Please DO NOT leave any paint products at the Recycling Depot!

(see over for list of products accepted/not accepted)



PRODUCTS ACCEPTED/NOT ACCEPTED (appendix A)

Architectural (Household) Paints

(Maximum Container Size: 25 Litres)

- All containers must be properly sealed, labeled and in original container.
- Full, partially full and empty containers are acceptable.

ACCEPTABLE HOUSEHOLD PAINTS

- ✓ Interior & exterior : latex, acrylic, water-based, alkyd, oil-based, enamel
- ✓ All types of finishes & sheens including textured
- ✓ Deck coatings & floor paints (including elastomeric)
- ✓ Concrete, drywall, stucco & driveway paints and sealers (non-tar-base)
- ✓ Marine paints (except antifouling)
- ✓ Melamine, metal & anti-rust paints

- ✓ Stains & shellacs
- ✓ Stain blocking paints
- ✓ Swimming pool (single component)
- ✓ Varnishes & urethanes (single component)
- ✓ Wood and masonry water repellents & sealers
- ✓ Wood finishing oils & preservatives (containing no pesticides)
- ✓ Already empty paint containers

Paint Aerosols

(Maximum Container size: 660g or 24 oz)

- All types of spray paint or paint aerosols- including consumer, automotive and industrial aerosols.
- Already emptied, partially full or full containers are accepted.

UNACCEPTABLE PRODUCTS

- ✗ Brushes & rollers
- ✗ Bulging containers
- ✗ Caulking compound, epoxies, glues or adhesives
- ✗ Colorants & tints

- ✗ Deck cleaners
- ✗ Industrial paints & finishes (baked-on, heat resistant etc...)
- ✗ Non-aerosol automotive paints
- ✗ Non-aerosol craft paints
- ✗ Paint thinners, mineral spirits or solvents
- ✗ Pesticide containing products e.g. creosote
- ✗ Quick drying paints
- ✗ Resins

- ✗ Roof patch or repair
- ✗ Tar-based or bitumen based product
- ✗ Traffic or line marking paint

- ✗ 2 part or component paints
- ✗ Improperly sealed containers or leaking

- ✗ Unidentifiable or unlabelled containers